

The U-Select® system

Always the right solution



PAUL WOLFF[®]

Innovative solutions for sustainable waste management and modern urban spaces

Since 1997, the U-Select® underground collection systems from PAUL WOLFF® have been setting standards for underground waste and recyclables collection, with numerous advantages for waste management and public spaces.

The large container volume reduces emptying and costs, while the underground placement saves visible space and improves cleanliness.

The Pro-Count® digital waste management system enables efficient waste disposal with fill level monitoring and emptying control.

The depot containers speed up and simplify the emptying process and reduce costs, while the easily accessible disposal columns provide added convenience for citizens and residents. The modular design enables customised configuration to suit your requirements.

Opt for a contemporary solution from PAUL WOLFF® that creates a clean, green and modern environment – for everyone.

Contents

Foreword		03
Contents		04
U-Select®	Systematic waste collection	05
	Structure and function	06
	From filling to emptying	09
U-Select® Superior series	Product overview	11
	Benefits and features	12
	Technical specifications	13
Pro-Count®	Digital waste management	15
LIFECYCLE ready	Value retention, reliability and durability	16
Our quality promise		18
Our company		19

The U-Select® system

Systematic waste collection

Everything in order

U-Select® underground collection systems combine design with protection against weather and vermin. They also keep the waste collection area clean and reduce odours and noise. Their aesthetic integration into urban areas or residential complexes significantly improves the quality of life.

Barrier-free and comfortable

The ergonomically designed U-Select® containers offer easily accessible, barrier-free insertion. This promotes efficient waste separation and improves the user experience for all citizens.

More control, lower costs

U-Select® reduces costs through longer emptying intervals and optimised disposal routes. A 5 m³ underground collection system corresponds to 5 x 1,100 litre containers but requires 5 x less space. With Pro-Count®, you benefit from continuous fill level monitoring, cost-by-cause billing and route optimisation.

Always the right solution

With a wide range of products, U-Select® systems fulfil a variety of needs and adapt to any waste management concept. Compact design and flexible container options offer solutions for all municipal and residential waste collection needs.

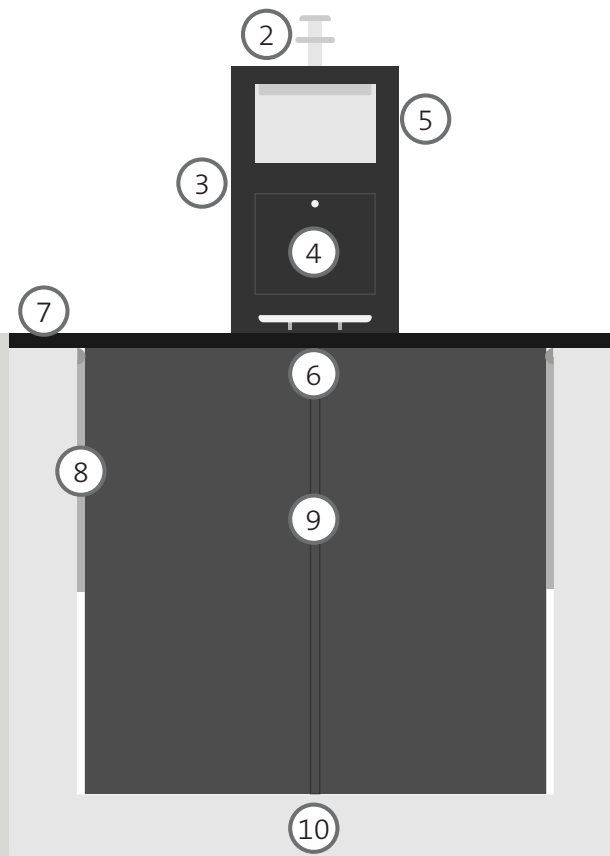
LIFECYCLE ready: Reliability and value retention

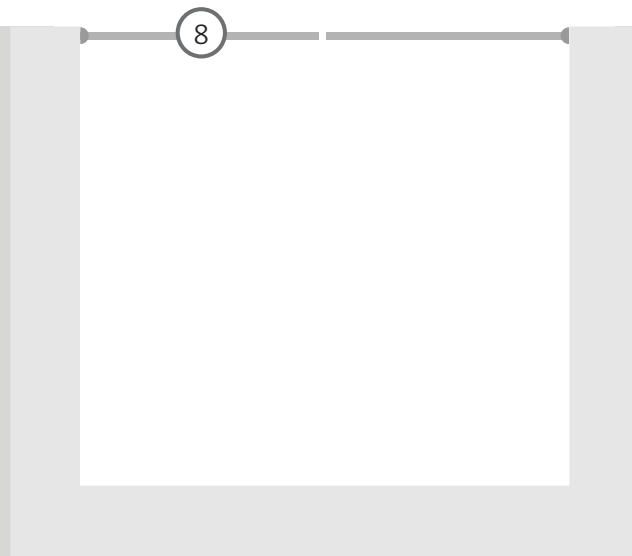
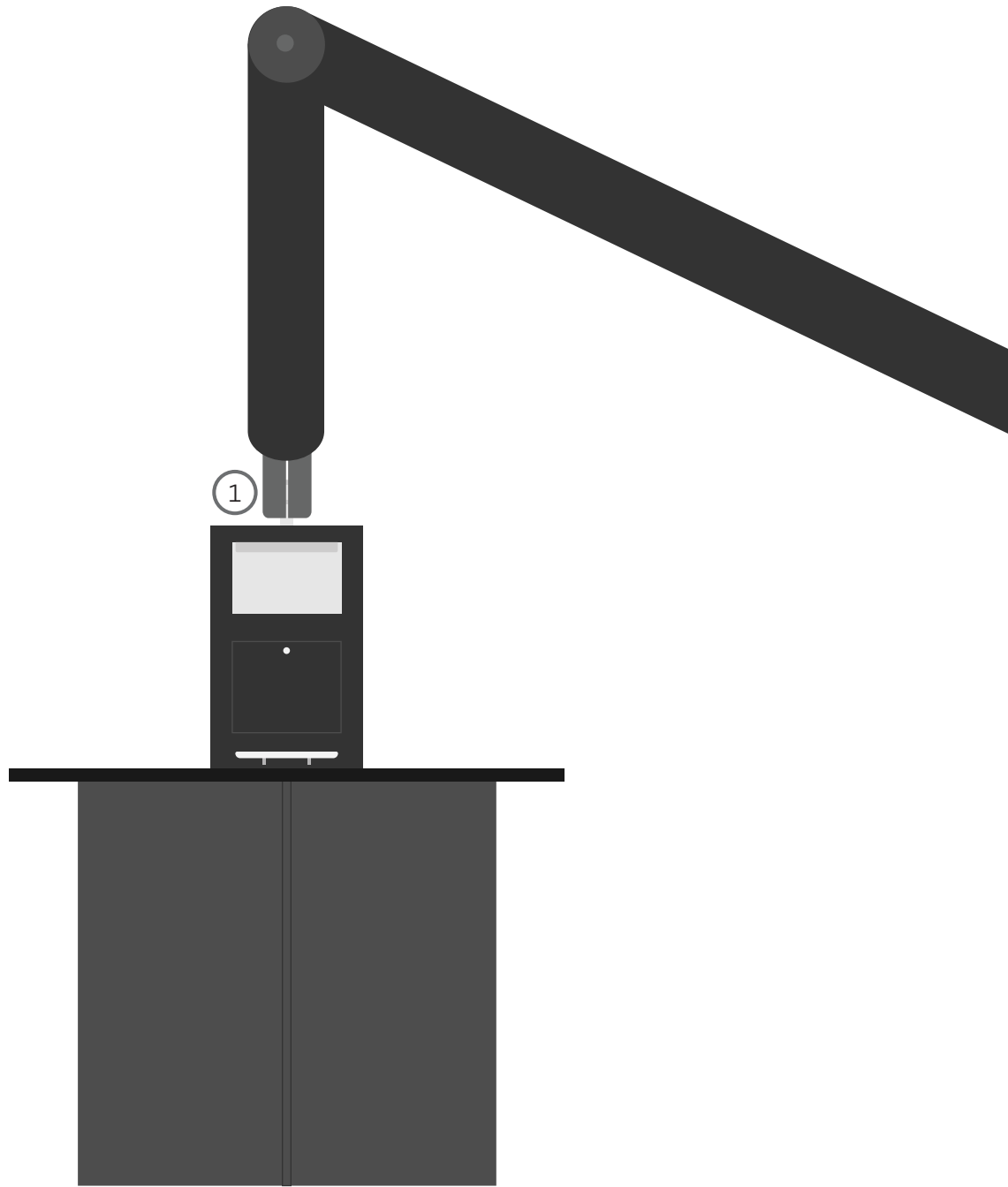
Regularly scheduled cleaning, inspections and maintenance prevent minor and major damage at an early stage. Repairs are carried out exclusively with original parts. Retrofitting and modernisation keep your systems technically up-to-date. A PAUL WOLFF® service contract guarantees reliable performance and maximises the value of your investment.

The U-Select[®] system

Structure and function

- 1 Crane with unloader**
Enables safe lifting and emptying of the collection container for efficient and hygienic emptying.
- 2 Pick-up system for crane**
Specialised vehicles lift containers safely; compatible with various crane lifting systems.
- 3 Disposal column**
Waste deposit made easy with one-hand operation; prevents waste from escaping and minimises noise.
- 4 Inspection flap**
Accessible point for maintenance and repair to facilitate early detection and rectification of problems.
- 5 Access control**
Keys, transponders or special access points for security and protection against unauthorised disposal.
- 6 Fill level sensor**
Monitors continuously and transmits information to a central system for needs-based emptying.
- 7 Walkway platform**
Provides a secure surface level, available in galvanised chequer plate or EPDM rubber granulate.
- 8 Safety floor**
Closes automatically when the container is removed; prevents accidental falling into the concrete pit.
- 9 Collection container**
Available in different volumes for different fractions.
- 10 Concrete pit**
Manufactured monolithically, resistant to environmental influences.







8

KEHRICHT

The U-Select[®] system

From filling to emptying



Convenient one-handed operation

The lid can be opened and operated with one hand. After waste deposit, the waste remains in the waste chute for the time being and drops into the collection container when the lid is closed.



Safe lifting

The crane pick-up system grips the moving drawbars securely and pulls them in. The container is lifted evenly out of the concrete pit and the safety floor closes automatically.



One-man operation emptying

The waste collector can lift and empty the collection container by themselves without assistance. The bottom flaps are opened by lowering the movable drawbar. This process is controlled via the pick-up system.



Lowering and closing

After emptying, the movable drawbar is tightened again and the bottom flaps close. The container is placed back into the pit.

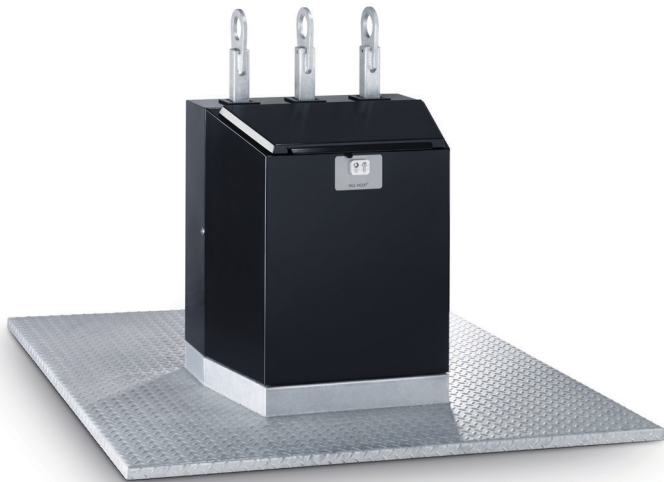


KEHRICHT

14

U-Select® Superior series

Product overview



Disposal column for bags with a volume of 40 to 80 litres.



Disposal column for bags with a volume of up to 110 litres.

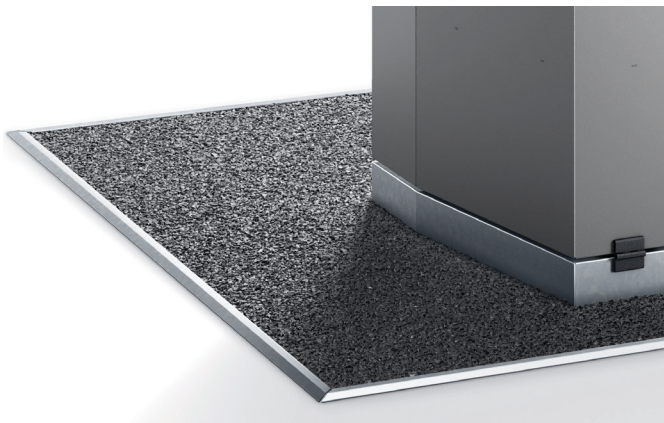
U-Select® Superior series

Benefits and features



Waste deposit slot for glass and cans

A rubber funnel opening with an internal tube ensures centred filling and noise reduction. Available as a single or double chamber system. In addition, there is a wide range of waste chutes for bags from 40 litres to 110 litres or Pro-Count® waste chutes for bags from 5 litres to 20 litres.



EPDM walkway platform

The walkway platform made of EPDM rubber granulate provides a safe and easily accessible surface level for users and waste disposal companies during the waste deposit and emptying phases. It is an alternative to the galvanised chequer plate floor.



Secure locking systems

The box lock with half-cylinder and triangular locking mechanism or the electronic lock with access management ensure controlled insertion by authorised persons to prevent unauthorised third-party access.



Housing front section with triangular locking mechanism

The housing can be swivelled forwards in a few simple steps to make the entire inner workings accessible. Maintenance-free telescopic dampers support noise reduction.

U-Select[®] Superior series

Technical specifications

Pick-up system	<ul style="list-style-type: none"> - Mushroom - 2-hook - 3-hook 		
<hr/>			
Dimensions of disposal column WxDxH (cm)			
40 l	680 x 640 x 970		
60 l	830 x 640 x 970		
80 l	830 x 640 x 970		
110 l	830 x 790 x 970		
<hr/>			
Operating and insertion height (cm)	91		
<hr/>			
Dimensions of waste deposit opening WxD (cm)			
40 l	36 x 28		
60 l	51 x 28		
80 l	51 x 28		
110 l	44 x 52		
Paper	51 x 15		
Glass (diameter)	20		
<hr/>			
Collection container			
Nominal volume (m ³)	3	4	5
of which approx. usable (m ³)	2.3	3.2	4.2
<hr/>			
Total height with hook mounts (cm)	276	323	370
<hr/>			
Weight incl. disposal column (kg)	700	750	800
<hr/>			
Concrete pit			
Installation dimensions WxDxH (cm)	185 x 185 x 170	185 x 185 x 215	185 x 185 x 260
<hr/>			
Weight incl. safety platform (kg)	3,400	4,150	4,900
<hr/>			
Wall thickness (cm)	10		
<hr/>			
Concrete quality	C30/37 WU ¹		
<hr/>			
Exposure classes	XC4, XF2, XD1, XA2, WA		

¹ DAFStb guideline 'Waterproof concrete structures', edition November 2017-12.



Pro-Count®

Digital waste management

Volume-dependent recording of waste quantities

The PAUL WOLFF® depot containers enable waste to be collected according to its originator ('polluter pays' principle). Tamper-proof disposal flaps ensure controlled access.

Optimisation of disposal logistics

Thanks to fill level measurement and automated online data exchange, the waste disposal company always receives information about the filling and utilisation level of the waste containers. This data optimises the emptying frequency and disposal route planning.

System integrator with long-standing experience

With over 20 years of experience in the field of waste chutes, PAUL WOLFF® is able to utilise its understanding of specific customer wishes and requirements to provide expert advice.

Audit-proof accounting system

Authorised users receive access by means of personalised transponders that process all billing-relevant information anonymously. This information is used for the utility bill.

Access regulation for collection of all fractions

If collection based on waste originator is not desired or supplemental collection of residual waste based on waste originator is not needed, the containers for the other fractions (recyclables, paper and biowaste) can be equipped with electronic access control.



LIFECYCLE ready

Value retention, reliability and durability

Turnkey installation

Your system is delivered and installed as a turnkey solution, including instruction and advice on expanding your systems. We recommend experienced specialist companies for civil engineering work.

Spare parts and repair

Fast and sustainable repairs by experienced service technicians guarantee the value retention and longevity of your system. Repairs are carried out as needed using original spare parts.

Modernisation and retrofitting

Modernisation expands the scope of use and integrates new features through spare parts. The refurbishment and integration of new components create a new look.

Return and recirculation

Before we deliver your new system, we handle the disposal of your old system. We also contribute to greater sustainability and environmental protection by recycling concrete and steel.

Cleaning and maintenance

Regularly scheduled cleaning and maintenance means that damage is recognised and prevented at an early stage, ensuring long-term functionality and availability of the system.

Service contracts

A PAUL WOLFF® service contract guarantees reliable performance and maximises the value of your investment by providing long-term protection against major repairs and downtime.

Pro-Count® waste management

An audit-proof, digital billing system enables waste to be allocated individually according to the 'polluter pays' principle. Efficient logistics are guaranteed through automatic fill level measurement.

Our quality promise

If you want to produce real quality, you need knowledge, expertise and a good deal of experience. After 65 years in business, PAUL WOLFF® has definitely reached this level. As a result, the company offers products of outstanding quality, including its own innovative product developments, which are constantly upgraded to meet the latest standards. Continuous improvement of our services is a key aspect of our business operations.

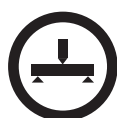
Furthermore, we manufacture almost everything in-house with a very high level of vertical integration. We have a modern concrete and sheet metal production facility and thus fulfil our own quality standards at all times. This is also ensured by our long-standing, experienced employees, who we train ourselves in eight professions. The same applies to delivery and ready-to-use installation with the necessary special equipment such as loading cranes and lifting gear as well as specially trained drivers.

Our quality is well documented, among other things, through our qualification in accordance with the relevant standards:

- DIN EN 15132 for waste container cabinets for mobile waste collection containers with a nominal volume of up to 1,700 litres,
- DIN EN 13071 for stationary waste collection containers up to 5,000 litres with container holders on the top and bottom outlets,
- DIN EN 13198 for street furniture and garden design elements,
- DIN EN 206-1 and DIN 1045 for German concrete standards.

Güteschutz Beton Nordrhein-Westfalen Beton- und Fertigteilwerke e. V. and Güteschutz Beton- und Fertigteilwerke Baden-Württemberg e. V.

We are a member of the relevant quality protection organisations that test, monitor and certify construction products and have the exclusive right to use the quality mark.



QUALISTEELCOAT quality mark

In addition, our products comply with the Qualisteelcoat quality mark in accordance with the regulations of the Qualitäts-gemeinschaft Industriebeschichtung e. V. for powder coating on steel and galvanised steel for exterior applications and in architecture. This means that our products have corrosion protection in accordance with DIN EN 1090.



Made in Germany

PAUL WOLFF® offers high quality made in Germany. And with our locations in Mönchengladbach and Ditzingen, we are where you need us: close to you.

Our company

PAUL WOLFF® is a company steeped in tradition that sets innovative trends. We are the market leader for solid, hygienic outdoor waste systems such as waste bin and container boxes. We specialise in innovative and secure protection and storage cabinets such as mobile bike lockers, parcel boxes and storage cabinets. We are also a leading manufacturer of dignified above-ground and underground cemetery systems for urns, urn graves and urn gravestones.

Our mission is to make the world we live in cleaner and to provide orderly and safe outdoor storage. We have represented these values since 1955. Our systems are in-house developments customised to the market. They are aligned with customer requirements and utilise the latest digital technologies.

PAUL WOLFF® today – a commercially independent family business in its fourth generation. We grow sustainably and in a controlled manner using in-house resources and generate appropriate profits.

The trust of our customers is our most important asset – and working together as partners is our credo. Decades of customer loyalty are a true testament to our partnership relations. Within the company, we rely on a culture of appreciation, continuous improvement and innovation. Our employees are guided by values such as commitment, responsibility and openness. With you, the market leader PAUL WOLFF® will set the pace for quality more than ever.



Last updated on 04/2024



Printed on paper labelled with the 'Blue Angel' environmental label!

PAUL WOLFF GmbH
Monschauer Strasse 22
41068 Mönchengladbach,
Germany

Tel.: +49 2161 930 3
Fax: +49 2161 930 599

info@paul-wolff.com

PAUL WOLFF GmbH
Benzstrasse 8
71254 Ditzingen,
Germany

Tel.: +49 7156 9349 0
Fax: +49 2161 930 599

www.paul-wolff.com

PAUL WOLFF 